

***Fatal Error !!!***

User Fatal Message

ERROR in ELCOT1

**FAQ's**

*femfat.ini file is not as expected*

*User Warning Message*

**Blocking Call Canceled**

*Complex programs have many possibilities  
to cause error messages*

To get something positive out of software-trouble-shooting developers create their own website and add a small chapter called "FAQ - frequently asked questions".

So did ECS !

We published the *FEMFAT* UserForum at <http://www.femfat.com> and suggested our customers to chat about their fatigue problems to get better solutions.

But most of you prefer the Telephone-Hotline of FEMFAT Support Team  
2 of the most asked questions were caused by

- 1) the definition of „default-material-database-path“**
- 2) starting FEMFAT with options (-ini or -job=) on PC**

## 1) definition of „default-material-database-path“

### Reason:

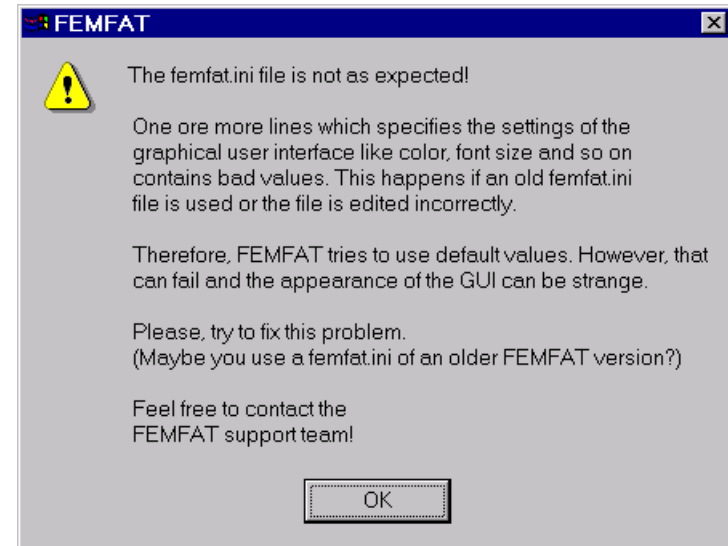
#### *femfat.ini -file changed*

in version 4.2 the line 39 is added.  
Where the default-path for the  
„material\_database“ is defined.

### Assumed Advantage:

#### *reading from different directories is more comfortable*

every time you change between reading stress-data, materials, structure-data and histories during a FEMFAT-job, you have to change directory several times - due to this line you find your material database directly.



## *femfat.ini* -file as installed by setup

```

grey60      Active Background Color
  11        Default Font Size
  14        Header1 Font Size
courier      Font Name
"U:/femfat42/material_database" Default Material Database Path
    
```

possible definitions which work

```

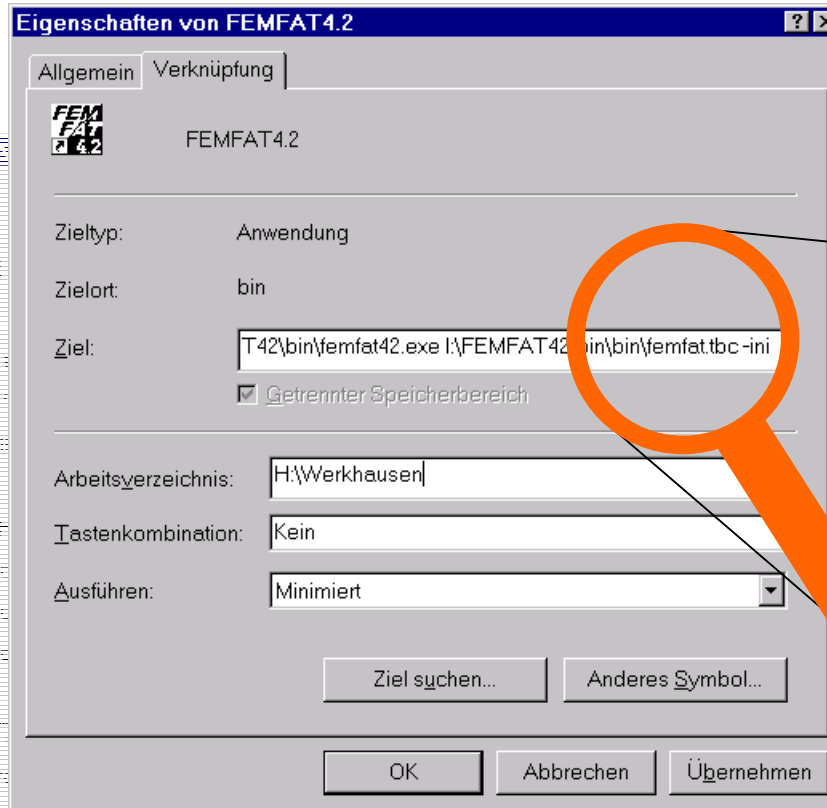
grey90      Help Text Background Color
  red       Selection Foreground Color
  yellow    Selection Background Color
  red       Message Text Color
grey75      Global Background Color
grey60      Active Background Color
  11        Default Font Size
  14        Header1 Font Size
courier      Font Name
"$FEMFAT4/material_database" Default Material Database Path
    
```

---

```

  10        Header1 Font Size
  helvetica Font Name
"I:/femfat2/material_database" Default Material Database Path
    
```

## 2) starting FEMFAT with options (-ini or -job=) on PC



*Sorry for the german screen-shots, "Windows NT German" is installed on this machine.*

## Latest development in *FEMFAT WELD* database

ECS suggests to define your special welding seams and joint-types by your own - based on experiments or by adjustment of known notch factors.

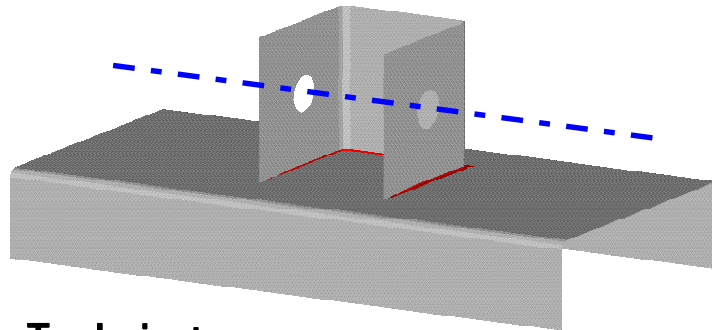
If you don't know how to define, ECS can do it for you as a kind of consulting work.

For example we improved "T-Joint" and "Overlap-Joint" based on additional experimental data and defined the database for "Overlap-Joint with clearance" and the so called "Flared-Joint" for Japanese customer.

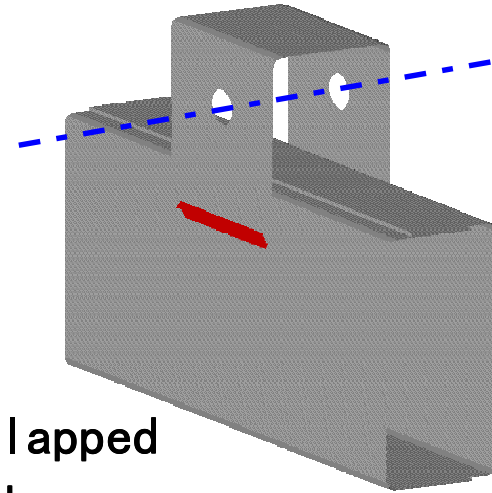
The development was presented to the member of **JSAE** on 23<sup>rd</sup> of May 2001

We appreciate to include a brief summary of this presentation:

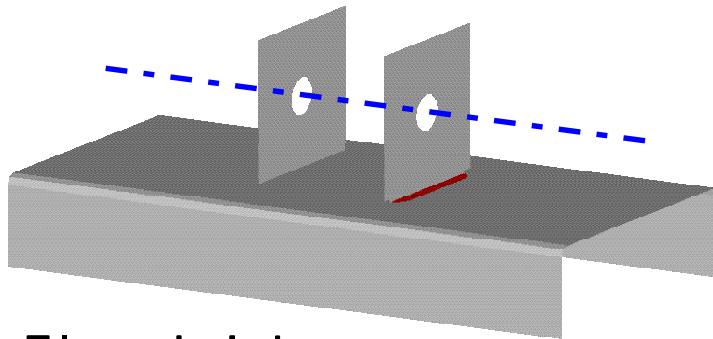
# The Shape of Test Pieces



T-Joint



Over lapped  
Joint

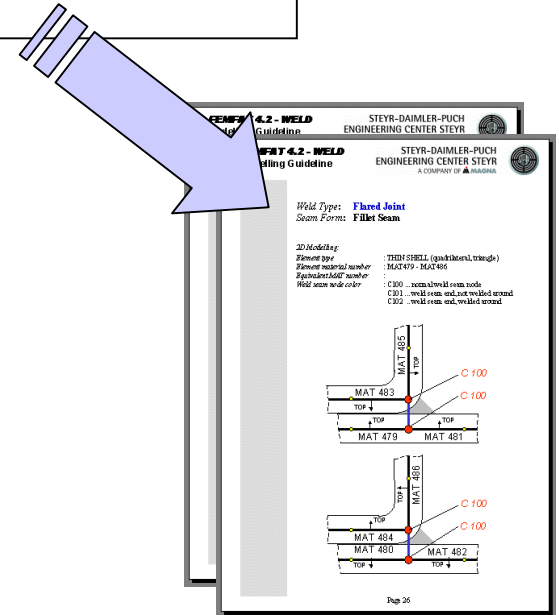
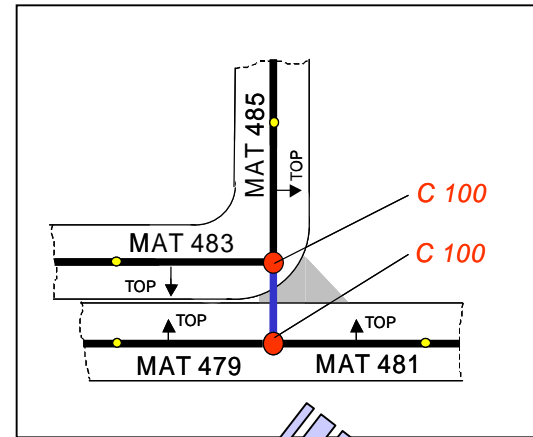
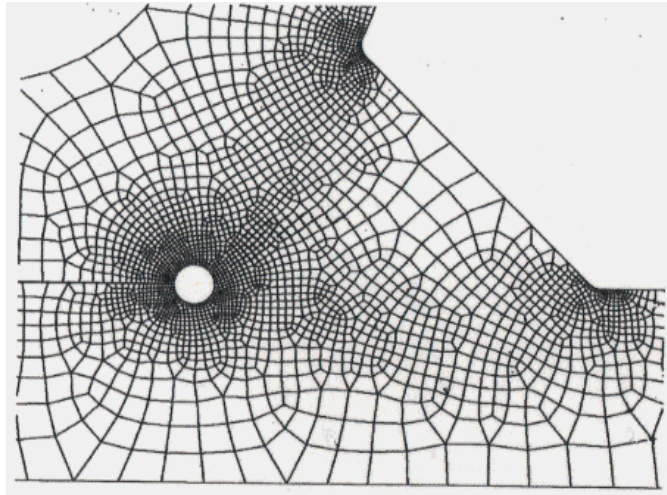
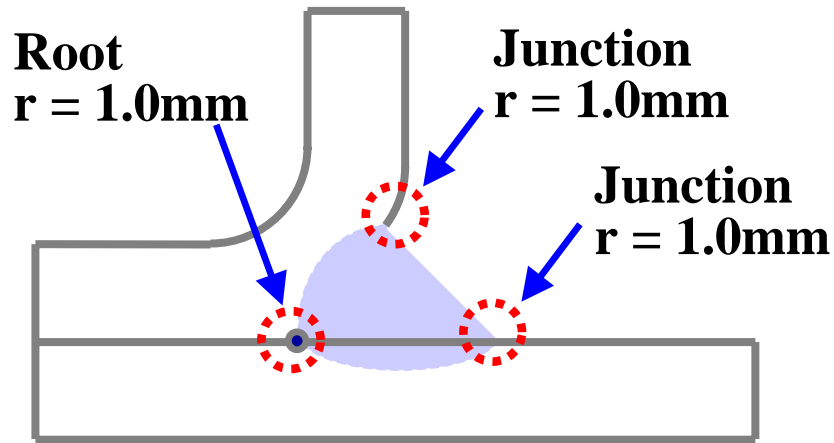


Flared-Joint

**Materials: SPHC270 , SAPH440**

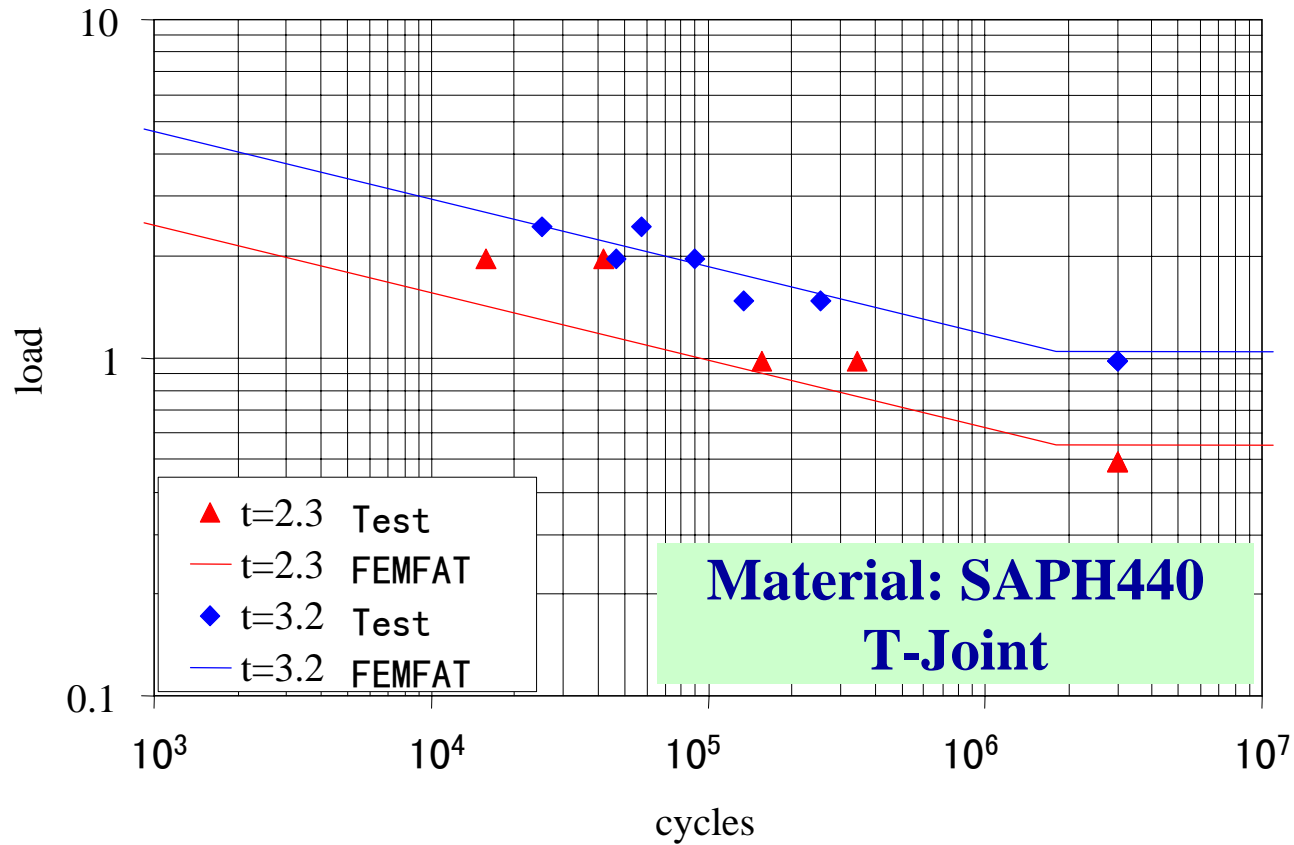
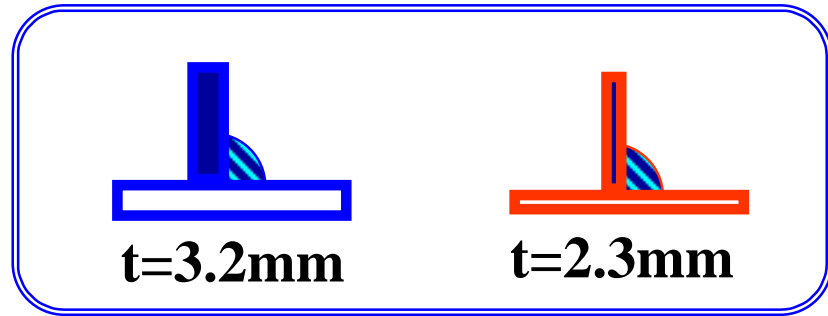
**Thickness: 2.3mm , 3.2mm**

# New Database for FEMFAT WELD





# The Influence of Thickness

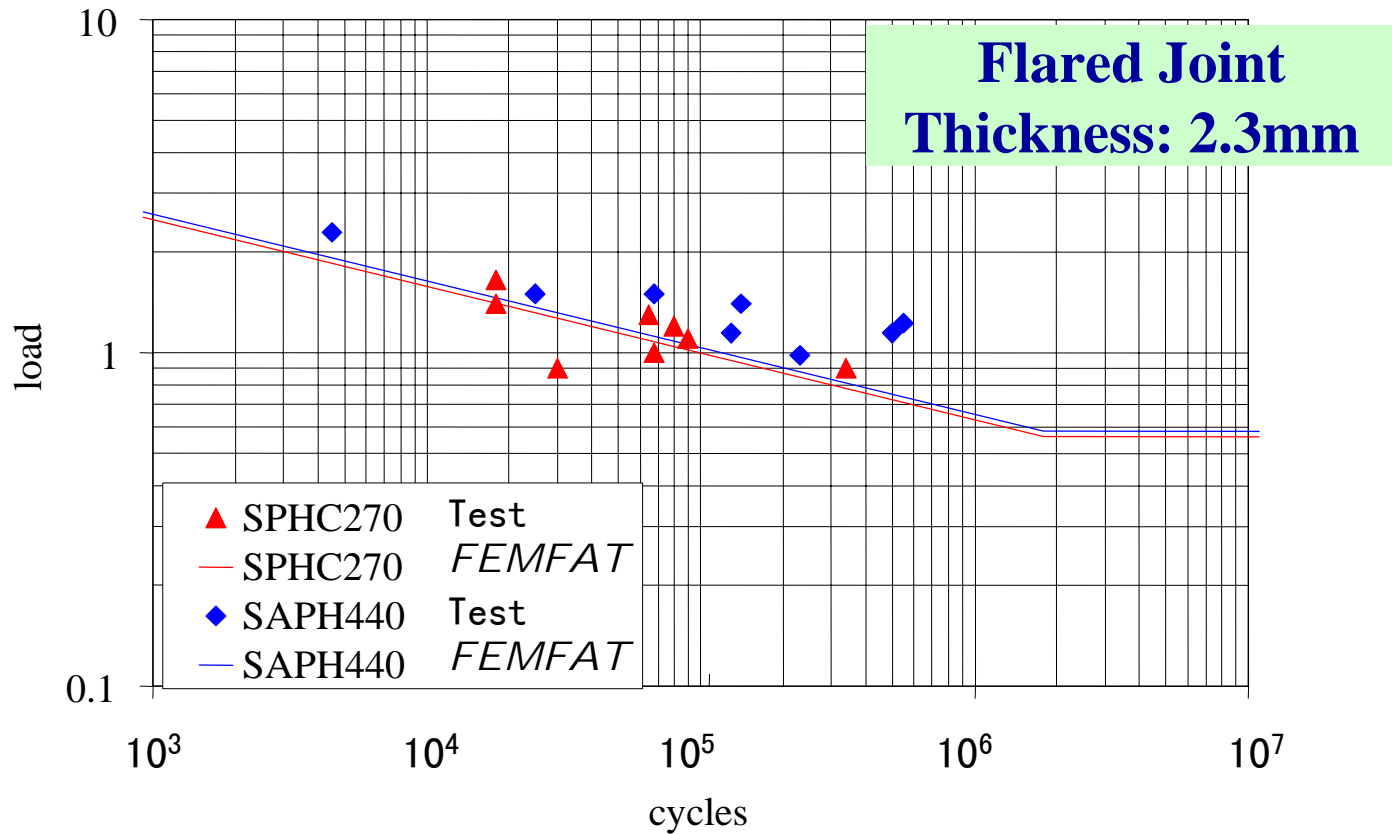


# The Influence of Material

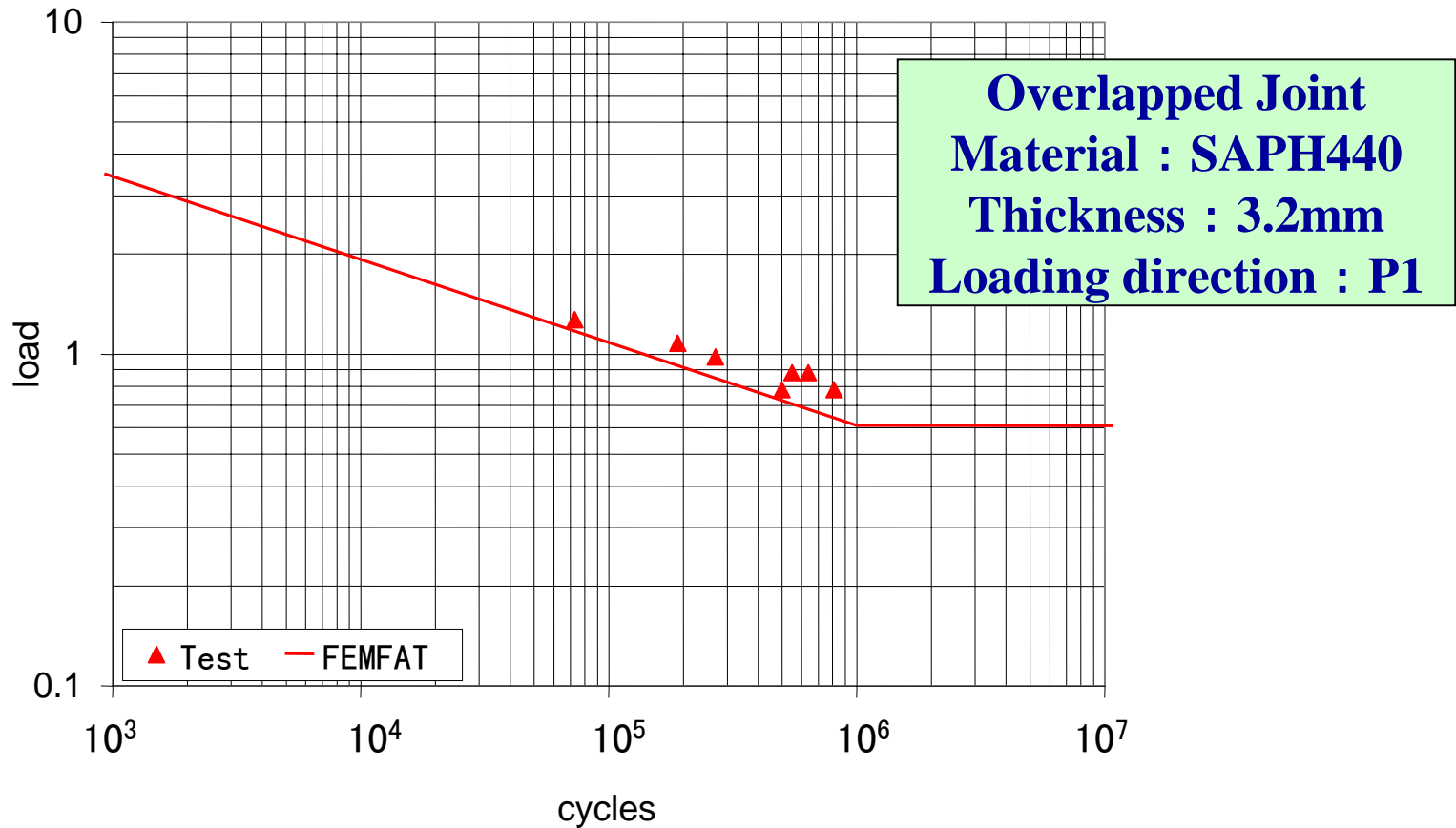
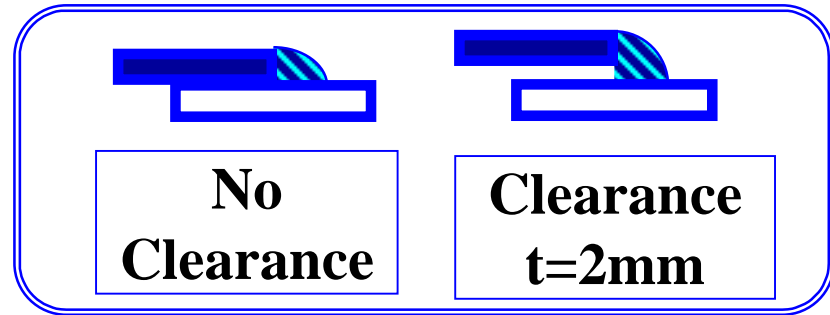
Material : Tensile Strength

SPHC270 : 351MPa

SAPH440 : 452MPa



# The Influence of Clearance



# The Influence of Welding Types

